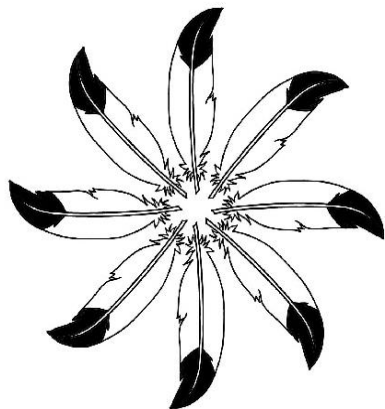


Improving End-of-Life Care in First Nations Communities:



The Power to Choose: Four First Nations describe their experience developing community palliative care programs
CHPCA, Oct. 30, 2015

Objectives

- To understand the unique context of palliative care in First Nations communities
- To demonstrate the strengths and capacities within First Nations communities in developing a palliative care program using a community capacity development approach and model
- To share promising palliative care practices and strategies developed through community based participatory action research in First Nations communities

Process of PC Program Development in First Nations Communities



SEQUENTIAL PHASES OF THE CAPACITY DEVELOPMENT MODEL

- 1) Grounding the Development in Community Values and Principles
- 2) Having Community Readiness
- 3) Experiencing a Catalyst
- 4) Creating the Palliative Care Program
- 5) Growing the Palliative Care Program

The Power to Choose Video

<http://www.eolfn.lakeheadu.ca/>

Six Nations of the Grand River Territory



Six Nations Initiatives

- MOU with HNHB CCAC
- Integration with the Regional Palliative Care Expert Consult Team (HNHB LHIN)
- Advanced Care Planning
- Four Strings Healing Ceremony
- Pilot Project Funding from HNHB LHIN:
 - Partnering with Stedman Hospice
 - Mentorship program for Clinical Nurse Specialist, Psycho-Social Bereavement Counsellor, and First Nation Physician
- Local First Nation Palliative Care Expert team, is now providing palliative home care in Six Nations

Fort William First Nation



Fort William FN Initiatives

- Journey Mapping Workshop
- Strengthening partnership with Dilico (H&CC provider)
- Community Awareness Sessions (6 sessions with help of community partners: Cancer Centre, CCAC, CERAH, Hospice Northwest)
- Improving Communication and Discharge Planning (TBRHSC, CCAC, & Dilico)
- Community ACP sessions & resource development
- Grief & Bereavement Workshop (winter 2015)

Naotkamegwanning First Nation



Naotkamegwanning FN Initiatives

- Cultural Competency Curriculum
- Telemedicine (pilot in collaboration with CCO & SJCG)
- Journey Mapping (3 workshops, 24 HCP)
- Advocacy – Federal & Provincial Members of Parliament
- Wiisokotaatiwin Program
 - Proposal for LHIN pilot funding was successful

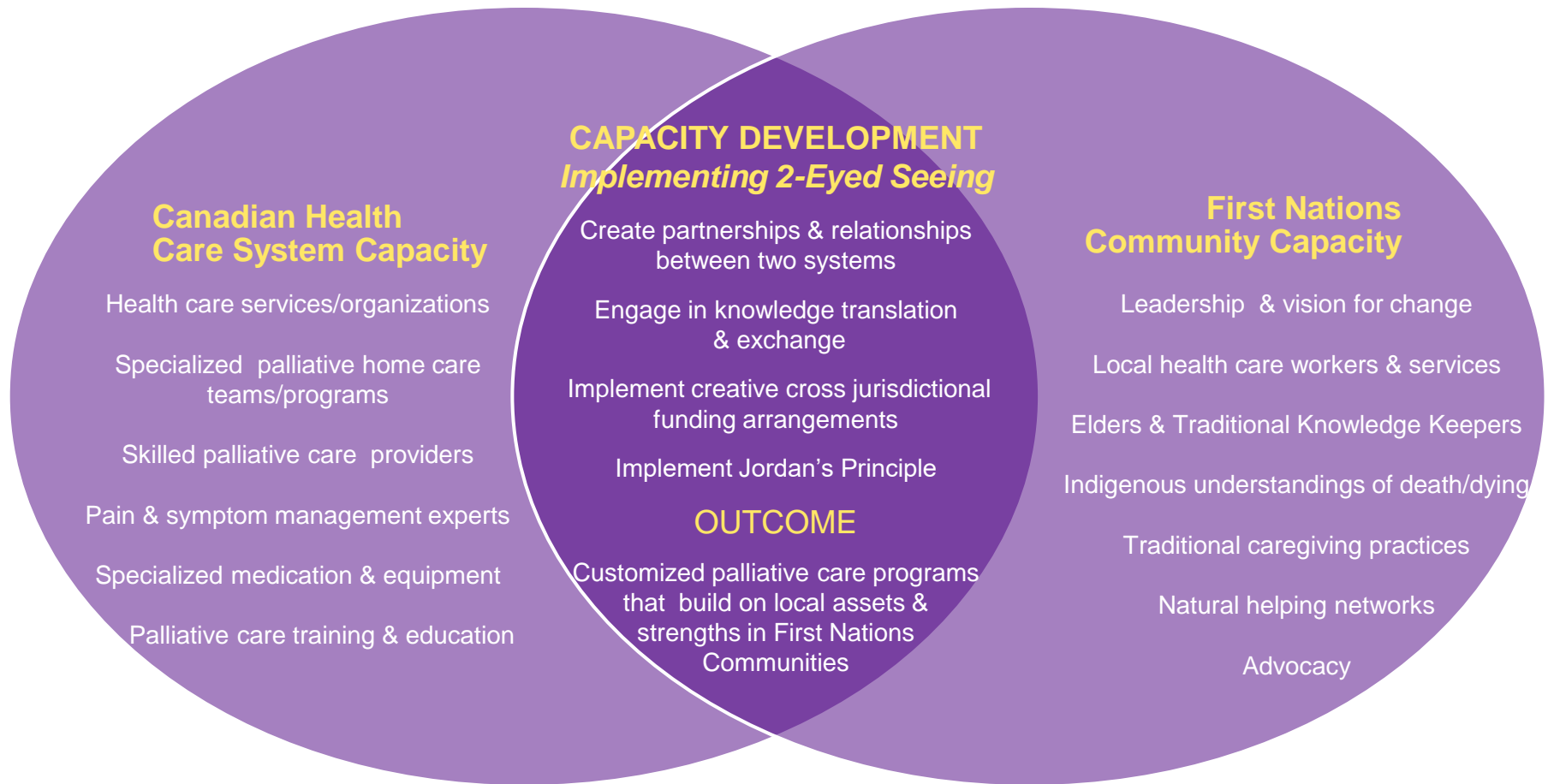
Peguis First Nation



Peguis First Nation

- Palliative Care Home Support Worker
- Grief & Bereavement Workshop
- MOU under discussion with Interlake Regional Health Authority
- Percy E. Moore Hospital - Doctors Home Visit Initiative and linkage with Palliative Care Nurse and program
- **Formalizing the Palliative Care Program**

Developing Palliative Care in First Nations Communities: Implementing *2-Eyed Seeing**



*Two-eyed Seeing Concept Created by Mi'kmaq Elder Albert Marshall.

Improving End of Life Care in First Nations Community Research Team (www.eolfn.lakeheadu.ca) adapted diagram from the Canadian Institutes of Health Research, Institute of Aboriginal Peoples' Health, Strategic Plan for 2006–2011.



Developing Palliative Care Programs
in First Nations Communities:
A WORKBOOK



EOLFN CHPCA Presentations

- Friday @ 1-2:30pm, Double Session:
 - Conducting Participatory Action Research with First Nations Communities: Lessons Learned from a 5yr CIHR Study
 - Program Development Guidelines & Resources for Developing PC Programs in First Nations Communities
- Friday @ 4:15-5:15pm:
 - Developing and Implementing The Six Nations Palliative Care/Shared Care Outreach Team
- Saturday @ 3-4pm:
 - Engaging Stakeholders in Journey Mapping: Creating and Implementing a Palliative Care Pathway, Naotkamegwanning First Nation
- Saturday @ 4:15-5:15pm:
 - Culturally Appropriate Advanced Care Planning Resources for First Nations Community Members: Resources & Strategies

Acknowledgements



Fort William First Nation



Peguis First Nation



Anishinabek Family Care



QUESTIONS

Contact Information

Dr. Mary Lou Kelley
Principal Investigator
Phone (807) 766-7270
Email eolfn@lakeheadu.ca

Holly Prince
Project Manager, Co-Investigator
Phone (807) 766-7274
Email: eolfn@lakeheadu.ca

www.eolfn.lakeheadu.ca